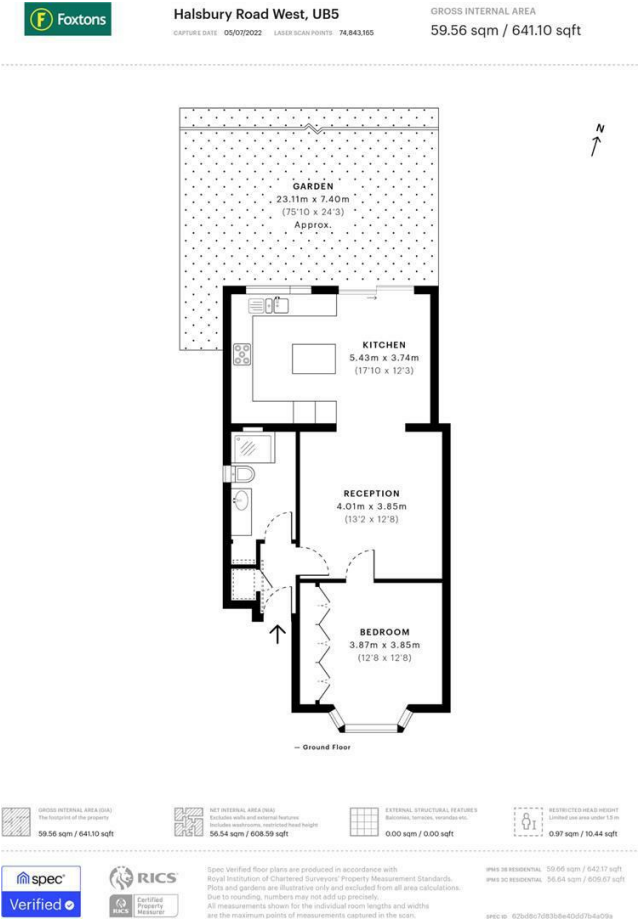




Halsbury Road West, Northolt, UB5 4PL
£1,600 Per Month

Located on Halsbury Road West, this well-presented one-bedroom, one-bathroom ground floor maisonette offers comfortable and convenient living close to Alexandra Park. The property features a spacious living area, sunlit interiors, neutral décor, and a well-proportioned double bedroom, along with the rare advantage of a large private rear garden. Halsbury Road West is a quiet residential setting within easy reach of the amenities along Northolt Road, including shops, cafés, restaurants, and everyday essentials. Excellent transport connections are close by: Northolt Park Station (Chiltern Railways) provides swift links into Marylebone, while Northolt Underground Station (Central Line) offers direct access into Central London. A range of bus routes also serve the area, ensuring convenient travel across the borough.



Energy Efficiency Rating		
	Current	Potential
Very energy efficient - lower running costs		
(92 plus) A		
(81-91) B		
(69-80) C	72	77
(55-68) D		
(39-54) E		
(21-38) F		
(1-20) G		
Not energy efficient - higher running costs		
England & Wales		EU Directive 2002/91/EC

You may download, store and use the material for your own personal use and research. You may not republish, retransmit, redistribute or otherwise make the material available to any party or make the same available on any website. These particulars, whilst believed to be accurate are set out as a general outline only for guidance and do not constitute any part of an offer or contract. Intending purchasers should not rely on them as statements or representation of fact, but must satisfy themselves by inspection or otherwise as to their accuracy. No person in this firm's employment has the authority to make or give any representation or warranty in respect of the property.

92 High Street, Ruislip, Middlesex, HA4 8LS
T: 01895 625999
lettings@gibsonhoney.co.uk
www.gibsonhoney.co.uk

